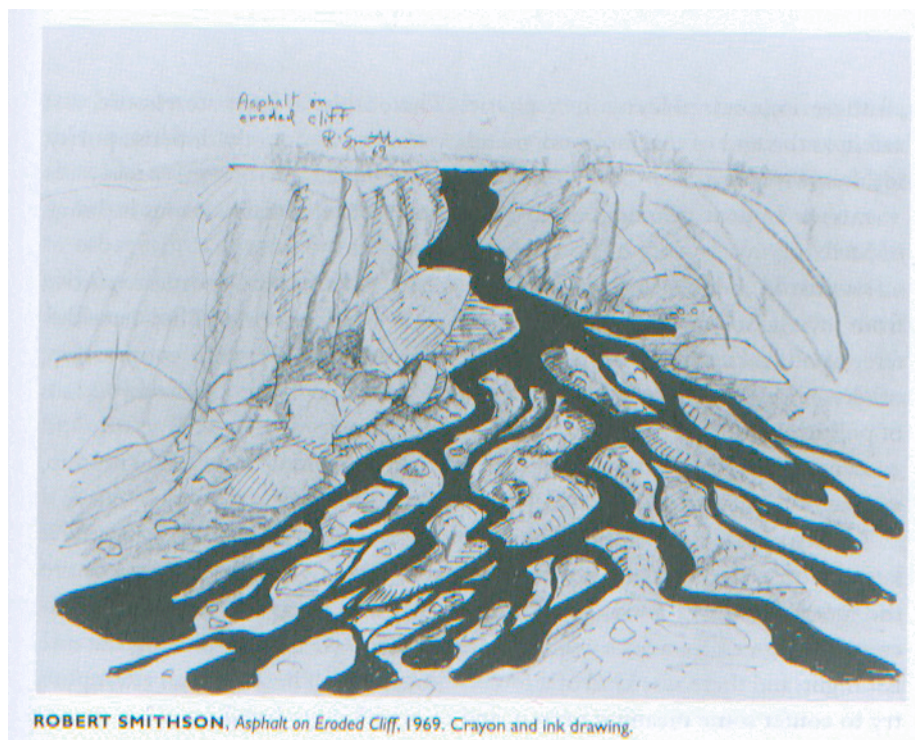
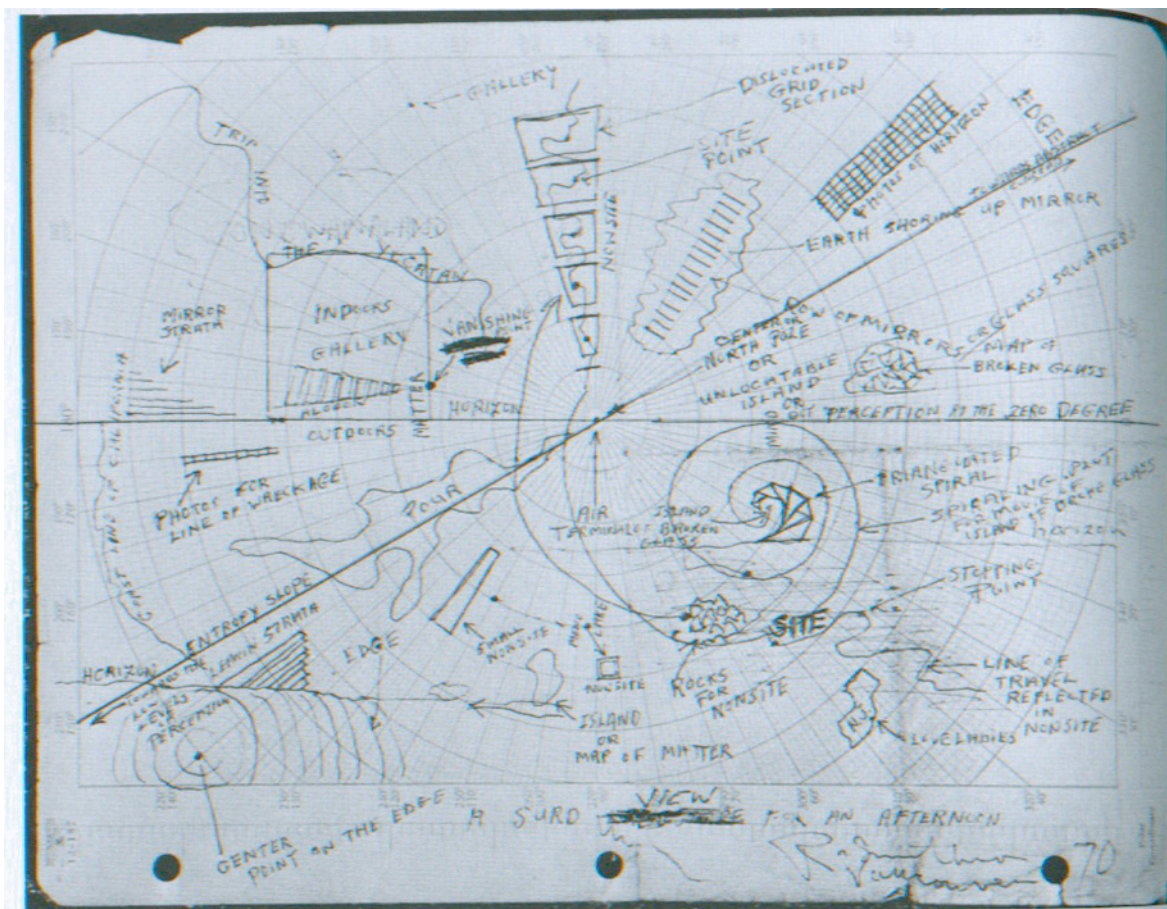


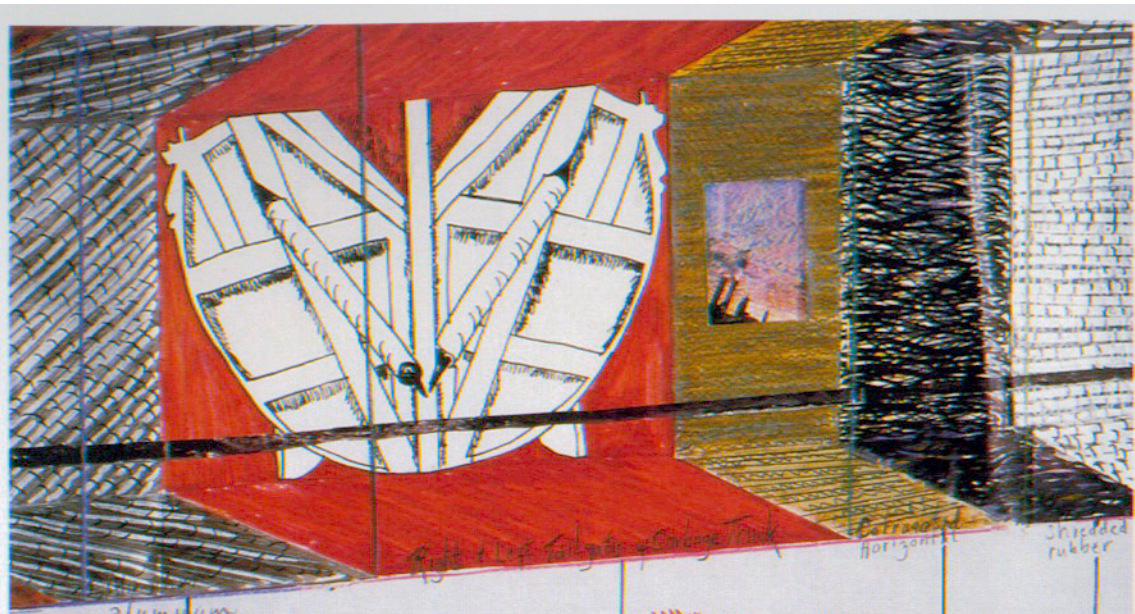
ROBERT SMITHSON, *The Hypothetical Continent of Lemuria*, 1969. Ink, crayon map, 22 x 17".



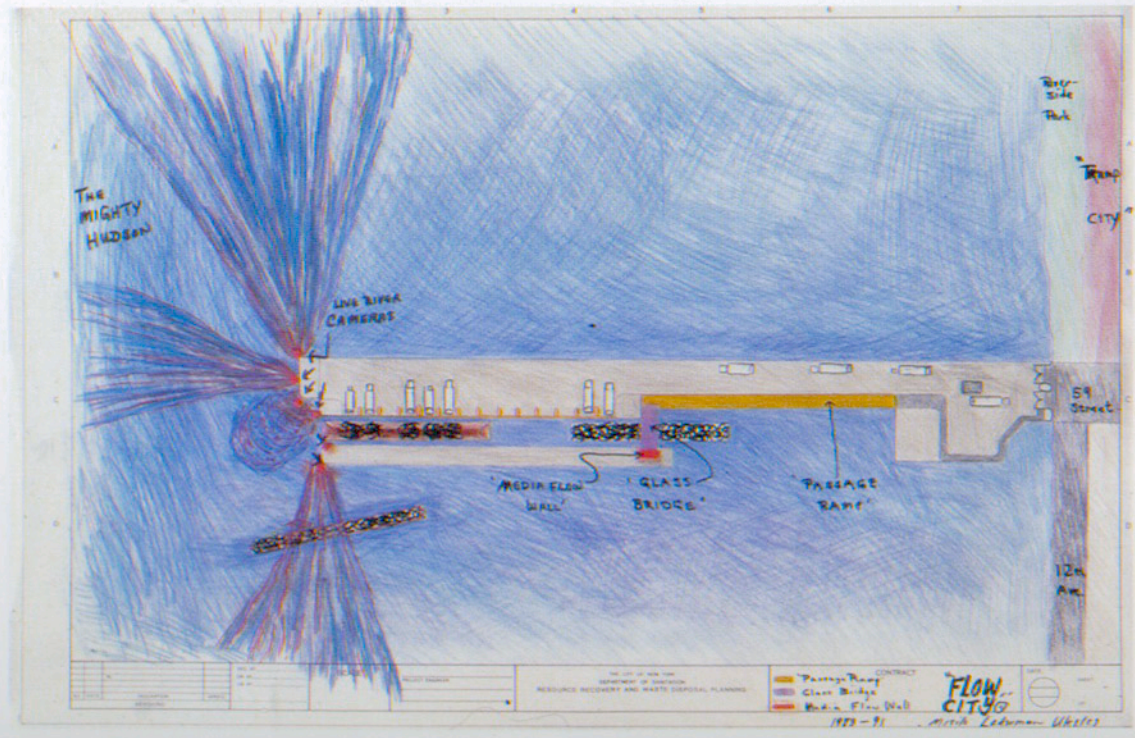
ROBERT SMITHSON, *Asphalt on Eroded Cliff*, 1969. Crayon and ink drawing.

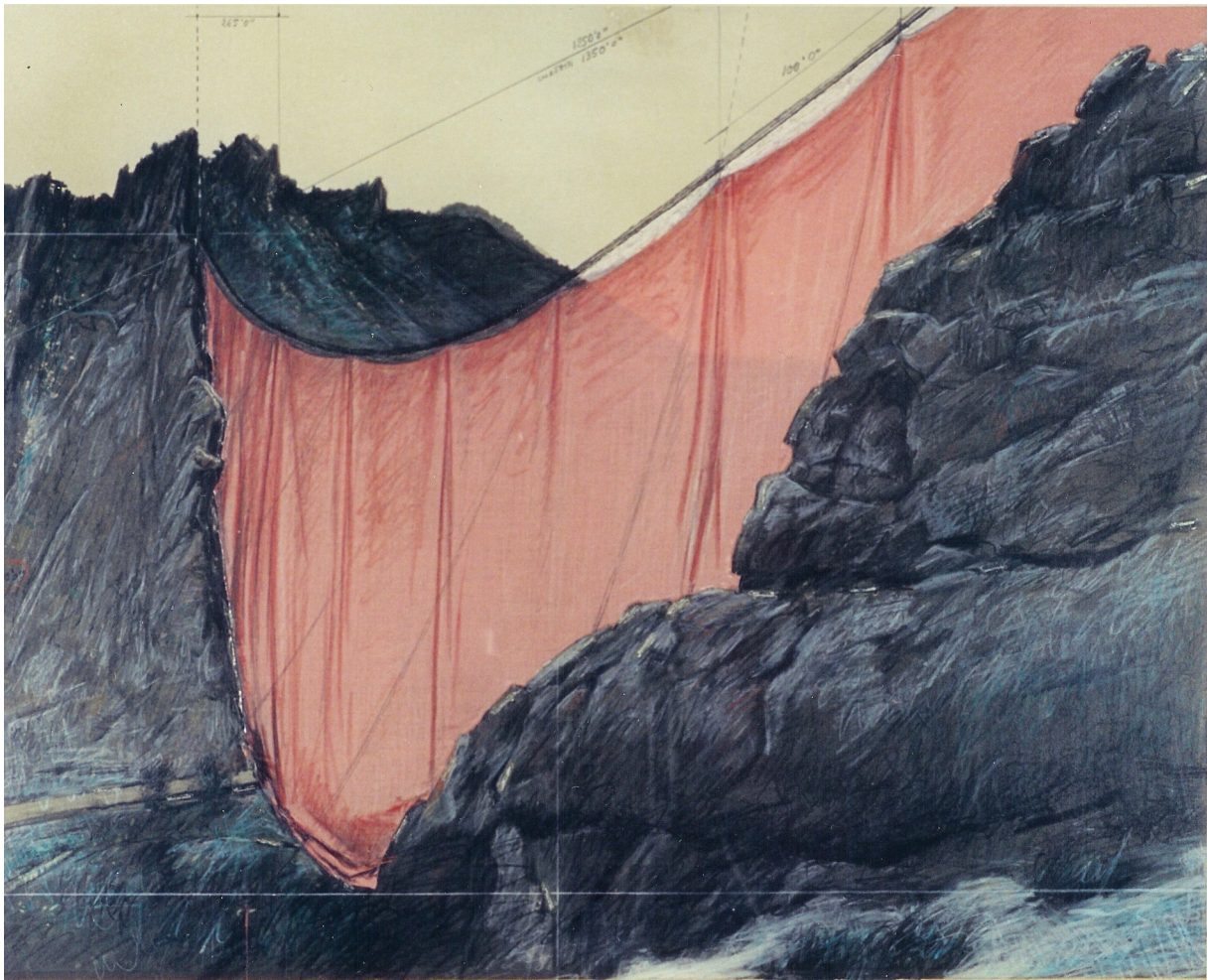


ROBERT SMITHSON. *A SUD View for an Afternoon*, 1969 (signed 1970). Ink, 8 1/2 x 11". This drawing was made during the conversations with Wheeler, during which Smithson refers to specific parts of it.



condition of hovering and renewable potentiality? "The Passage Ramp" of FLOW CITY
M. L. UKELE



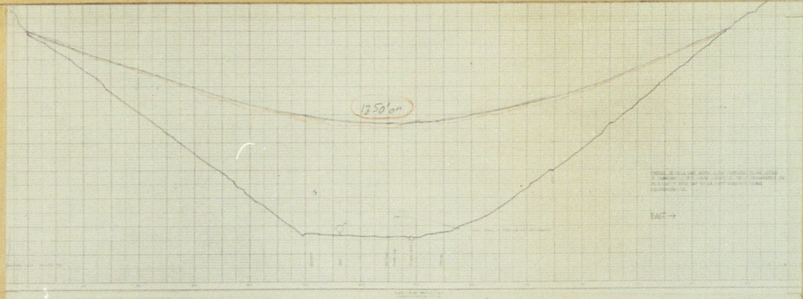


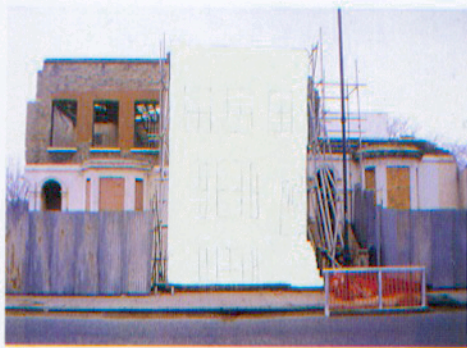
TIE BACK ANCHORAGE
18" ROCK ANCHORAGE

TIE BACK CABLE
1 3/4" CABLE STRENGTH OVER 100 TONS

Chute 1971

VALLEY CURTAIN (PROJECT FOR COLORADO) RIPLE, 216 MILES WEST FROM DENVER, 7 MILES NORTH FROM RIPLE. WIDTH - 1350' 0" (OF THE CURTAIN) height: 205' - 400'





1 Rachel Whiteread, sketches for House, 1992-93

Worm pyroxy line surface (60 x 10) on the surface of the water, extending into the bay 200 feet
 Islands # 3 width 225 feet length 1075 feet



Archival from 4-1

Surrounded Islands (recept for Biscayne
 Bay, Greater Miami, Florida)

Fiber (7x7 inch)



The floating island attached to a land from (distance of 100' x 112')

